

TWIN WHEEL CASTERS HOODED

NYLON HOODED TWIN WHEEL

Standard Features

- 100% Nylon Body Construction
- Black Color
- Variety of Fastenings
- Load Capacity from 60-100 lbs

Options

- Brake
- Polyurethane Tread

EURO STYLE TWIN WHEEL

Standard Features

- 100% Nylon Body Construction
- Black Color
- Load Capacity 75 lbs
- Meets or exceeds ANSI/BIFMA Specification

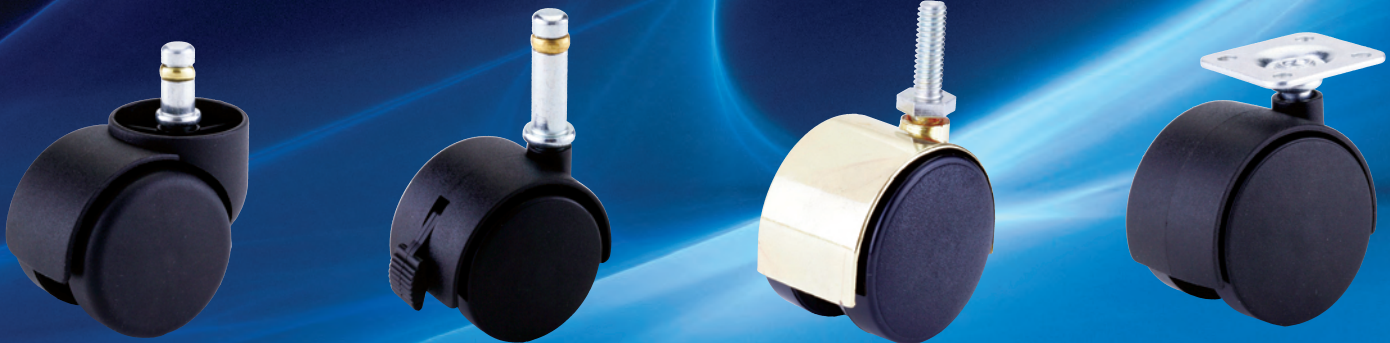
Options

- Compression Release Brake
- Compression Brake

ZINC DIE CAST HOODED TWIN WHEELS

Standard Features

- Zinc Die Cast Body and Hood
- Variety of Fastenings
- Load Capacity



Jacob Holtz Company an industry leader in nylon hooded twin wheels, nylon euro twin wheels and zinc die-cast twin wheels servicing the furniture, display/store fixture, medical, and equipment industries from the small entrepreneur to the large International OEM's. Jacob Holtz offers a large selection and inventory to handle your volume needs.

Nylon Hooded Twin Wheel Casters

Part No.	Wheel Diameter	Top Fitting
400-0000	40MM	1-1/2" X 1-1/2" TOP PLATE, BOLT HOLE CENTERS 1" X 1"
400-0010	40MM	5/16" X 1-1/2" GRIP NECK SOCKET STEM
400-0021	40MM	5/16"-18 X 3/4" THREADED STEM
500-0000	50MM	1-1/2" X 1-1/2" TOP PLATE, BOLT HOLE CENTERS 1" X 1"
500-0010	50MM	5/16" X 1-1/2" GRIP NECK SOCKET STEM
500-0014	50MM	3/4" CASTER CLIP, U-CLIP, 1-1/2" LONG X 1-1/4" HIGH, 1/8" THREADED HOLE LOCATED 1/4" DOWN FROM TOP CENTER, WITH SCREWS
500-0020	50MM	5/16"-18 X 1/2" THREADED STEM
500-0021	50MM	5/16"-18 X 3/4" THREADED STEM
500-0022	50MM	5/16"-18 X 1" THREADED STEM
500-0027	50MM	3/8"-16 X 1" THREADED STEM
500-0040	50MM	7/16" X 7/8" FRICTION RING STEM, WIRE RING
500-00XX	50MM	50MM BLACK, NYLON, HOODED, TWIN WHEEL CASTER BODY ONLY
600-0010	60MM	5/16" X 1-1/2" GRIP NECK SOCKET STEM
600-0040	60MM	7/16" X 7/8" FRICTION RING STEM, WIRE RING

Euro Style Nylon Hooded Twin Wheel Casters

Part No.	Wheel Diameter	Top Fitting
500-0040-EU38	50MM	7/16" X 7/8" FRICTION RING STEM, STEEL WIRE RING, 38MM EURO STYLE NECK DIAMETER
500-0040-EU45	50MM	7/16" X 7/8" FRICTION RING STEM, STEEL WIRE RING, 45MM EURO STYLE NECK DIAMETER
550-0040-EU38	55MM	7/16" X 7/8" FRICTION RING STEM, STEEL WIRE RING, 38MM EURO STYLE NECK DIAMETER
550-0040-EU45	55MM	7/16" X 7/8" FRICTION RING STEM, STEEL WIRE RING, 45MM EURO STYLE NECK DIAMETER

Zinc Die Cast Nylon Hooded Twin Wheel Casters

Part No.	Wheel Diameter	Top Fitting
500-2060	50MM	7/16" X 1-1/2" FRICTION RING STEM, BRASS BAND, CHROME FINISH
500-2210	50MM	5/16" X 1-1/2" GRIP NECK SOCKET STEM, ANTIQUE BRASS FINISH
500-2260	50MM	7/16" X 1-1/2" FRICTION RING STEM, BRASS BAND, ANTIQUE BRASS FINISH

JACOB HOLTZ COMPANY LIMITED WARRANTY POLICY

Jacob Holtz casters and products are warranted against defects in material and workmanship for a period of (1) year from the date of the original purchase. Any product found to be defective due to material or workmanship and returned to JHC with prior written authorization, within the warranty period will be repaired or replaced free of charge, excluding freight and installation.

This Limited Warranty does not include any product that has been abused, misused, mishandled, altered, or improperly installed. Jacob Holtz Company's obligation under this Limited Warranty is limited to repair, replacement, or refund of the purchase price at the sole discretion of The Jacob Holtz Company.

This Limited Warranty is provided in lieu of all other warranties, expressed or implied, and all other warranties of merchantability and fitness for a particular purpose, are hereby excluded and disclaimed.